



How did that happen? What it takes to make the weaving and demonstration season for the Weavers Guild of Springfield!

Have you ever thought about the pre-planning, planning, and coordination it takes to make the weaving and demonstration season a success for our weaving guild? Here is a short discussion of that process.

It begins with a decision about which event to commit our time and resources to at least 11 months prior to the first event of the upcoming season – Mass Sheep and Wool (referred to as Cummington by us), Glasgowland Scottish Festival (we have supported this event from the beginning-25 years total), New England Weavers Seminar (every odd year in either June or July), Shelburne Grange, The Big E/Creative Arts, Historic Hatfield, Conway Festival of the Hills, and sometimes other local events with the town of Longmeadow. After the decision about which event then it is what type of support/demonstration we will conduct at these events:

- do we have weaving and spinning;
- do we offer cards with samples for the individuals who try their hand at weaving;
- how many and what type of looms;
- list of other items needed at each event such as water, tablecloths, display and selling accessories, designing and printing the flyers about the weaving programs, prepping the Guild box with items to keep machinery working, Guild banner, etc., and
- minimum number of members at each event to make it successful

Now the real work begins!

- Structo table looms:
 - ◊ How many are needed-Guild members as well as the ones owned by the Guild members
 - ◊ Are they all threaded and ready to go. Look at each loom to make sure no repair is needed: extra heddles, tie-on or thread a new design (who will select new design), and yarn for warps
 - ◊ Decision on when to cut off the woven warp to cut into squares for the cards, based upon how much is woven and how many cards are needed of each type for the season/upcoming event
 - ◊ Tracking where looms are located before and after each event (we have lost one over the years)
- Harrisville Floor Loom. At one point we use to thread at least two looms to have available at several events but we now only take one. The big decision here is what will we weave, sourcing the yarn, finding someone to come up with a design, and then someone to thread the loom and weave at least one of the finished item before the event. If it is a towel then weave, wash and hem so that it is easier to explain what is happening on the floor loom. In the past WEBS has given us yarn but in the last ten years it has been donation of yarns from members. We have worn out this method so will probably need to purchase yarn. Many times the woven items are sold at one of the aforementioned events.

- Communication with the event coordinator about our participation, type of participation, if a parking pass or admission ticket is needed-when will it/they be available, receive those items and post to participating members ahead of the event - this is a letter, envelope and stamps.
- Preparing the cards – we have two types of cards, the straight non-folded one and the tri-folded one.
 - ♦ The straight cards needs to printed, cut, fabric pieces cut and edges secured either by tape or glue. Paste sample on cards.
 - ♦ Folded cards: cut fabric, zigzag 4 edges of each strip, fold the blank card, glue sample to the opening, glue the card closed, and stamp with Guild logo.
 - * This year we have seen more and more youngsters wanting to open the folded cards to handle the fabric sample but not detach it. We are thinking about just gluing the fabric to the opening and bringing the rolling adhesive to secure the folded cards at the event. Think about it; time require to prepare cards for the Scottish Festival is about 5 hours and cost about \$8 in glue (does not include the cost of the blank card or the card stock)
- The labor intensive part is packing cars and unpacking at each event. We joke that we are tired before we even get started with all of the lifting and carting.
- Now the easy part for most of us, showing up and working all day keeping the participants happy and interested.

We are extremely grateful for members who find ways to participate and help even if not at the actual event because of distance and other commitments. Help is always needed so do not be shy about volunteering to attend and make your presence felt.



2018-2019 Programs

- September 9, AM** *Summer Wrap Up*-Cummington, Scottish Festival, Shelburne Grange.
Introduction to Study Group:
Supplementary Warp – Susan Wright
- October 13, All Day** *Warp Painting*—Mary Mandarino
- November 3, All Day** *Constructing Holiday Ornaments*—Christine Duckworth
- December 1,** *Holiday Party & Craft:* Nancy Evans
- January 5, All Day** *Double Knitting*—Janet Denis
- February 2, AM** *Blanket Weaving:* Peggy Hart
February 2, PM *Trip to Ghana:* Leslie Crane
- March 2, AM** *Interpreting Handbook of Weaves:* Loris Epps
March 2, PM *Open Reeds* : Susan Ballenger
- April 6, AM** *Study Group* Wrap-up and sample exchange
April 6, PM *Loom Told Tales*—Ute Bargmann
- May 12, All Day** *Potluck & year wrap up*

Why join the study group

Learning! If you join our yearly study group you will learn a new or develop deeper skills of a weaving structure or topic.

Membership is open to all and is encouraged. Think about joining even if you can only complete weaving on paper.

Members are normally asked to weave a sample and share one with other members of the study group. A finished product is desired and we display at NEWS and members can also enter into local juried exhibits/shows such as Shelburne Grange, Creative Arts at the Big E, or the Spencer or Heath Fairs.

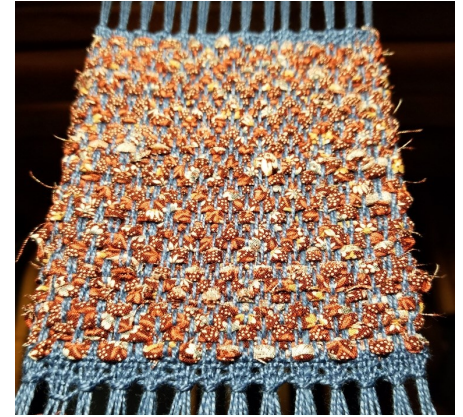
The group is led by a member who has researched the topic and can offer guidance and suggestions.

This year's topic is

Supplementary Warp.

Shelburne Grange

Thanks to Susan, Ute, Jane, Doris, and Loris for weaving at this year's Shelburne Grange. To the right is the rug mugs that we wove on the Harrisville for demonstration. The warp was 5/2 cotton at 15 epi and the strips were cut from fabric donated by Jo Ann—the strips were about 1/2 wide and woven with the printed side showing (as much as possible). One person from the state of Washington bought the first set and we had to quickly weave another set at the fair.



Spencer Fair

Bev and Janet again helped Pam at the Spencer Fair on August 31st until September 3rd, 2018. The Spencer Fair is an old time, traditional country fair including ox and horse pulls, cattle, rabbit and poultry shows, hall exhibits, midway and outdoor entertainment.



Digitizing Guild Minutes

This project was started a few year ago but we were not able to take it too completion. Several members gathered on a Saturday in late June to again try to complete this task. We were hoping to finish but we found out that we are missing quite a few years of minutes. A list of missing minutes will be published and members are asked to delve into all of the tote bags we keep and bring to each month to see if we can call this COMPLETE!

The final effort should afford us more storage space in our Guild library.



New books added to Library

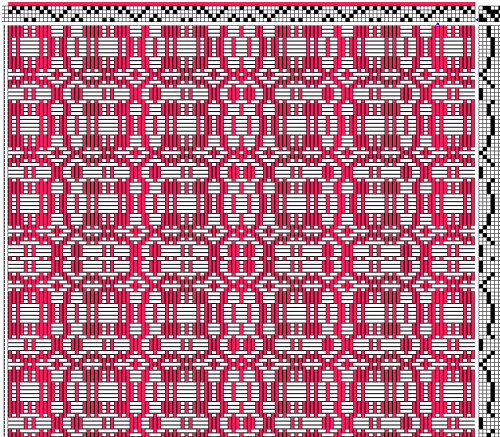
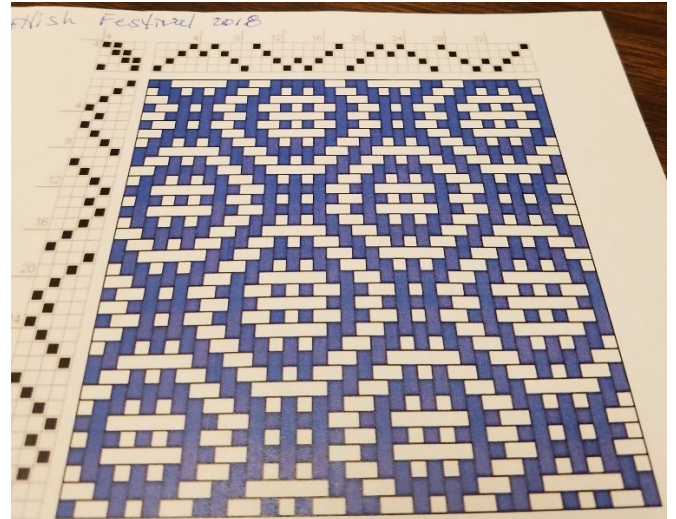
Designing with Blocks by Doramay Keasbey

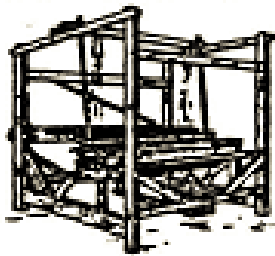
Weaving on Three Shafts by Erica de Ruyter (Weven op 3 schachten). This book is reprinted! Renewed and extended edition in full color, bilingual in Dutch and English.

Many others were added and the Librarian will have on display at the September meeting.



Scottish Festival 2018 towel, lavender sachet holders, and handwoven card inserts





ESTABLISHED 1951

Weavers Guild of Springfield

PO Box 2605

Springfield, MA 01101-2605

The Weavers Guild of Springfield is made up of men and women living in the greater Springfield area who are interested in the design and weaving of textile materials. The present membership is approximately 35 persons.

The guild was first organized in November 1951, and has been concerned with promoting interest in weaving since that time. Meetings are held on the first Saturday of each month from September to May inclusive.

Membership is open to anyone who is interested in this field of activity. At the present time the list of members includes those who are just starting to take lessons and others who have spent many years weaving and studying textile design and production.

National Towel Day is May 25th

fans openly carry a towel with them, as described in Adams' *The Hitchhiker's Guide to the Galaxy*, to demonstrate their appreciation for the books and the author. But we will adapt for weavers by bringing a recently woven or gifted towel to the Annual Meeting. Please feel free to share your draft and a sample (not required).

The commemoration was first held May 25, 2001.

Based on the book a towel is the most massively useful thing an interstellar hitchhiker can have.

<http://www.towelday.org/>

Tweet #towelday

We can post our picture on Facebook (<https://www.facebook.com/towelday>) or flickr (<https://www.flickr.com/groups/towelday/pool/>)

YouTube

(https://www.youtube.com/results?search_query=%22towel+day+22+OR+towelday&search_sort=video_date_uploaded)

Hostess

September = Susan Wright

October = Barbara Eves

November = Doris Koziol

January = Pat Billingsley

February = Leslie Craine

March = Jo Ann Miner

April = Bev Komisaruk

